

Service Integration Initiative (SII)

Building state-wide capacity for integrated, front-line responses to people with multiple needs who are experiencing or at risk of homelessness



WHO DOES SII SUPPORT?

Service providers who support individuals and families with a range of needs in addition to experiencing, or at risk of homelessness.

LOCATIONS

Place-Based Care Coordination Facilitators work across the following regions:

- | | |
|---------------|------------------|
| ✓ Gold Coast | ✓ Sunshine Coast |
| ✓ Logan | ✓ Mackay |
| ✓ Redlands | ✓ Townsville |
| ✓ Brisbane | ✓ Cairns |
| ✓ Moreton Bay | |

For referral and consent forms, please contact your region's facilitator.

CARE COORDINATION

To get in touch with your region's facilitator, visit Our Team page on the Q Shelter website for contact details. Or just send an email to info@qshelter.asn.au

KEY BENEFITS FOR SERVICE PROVIDERS

- Opportunity to join a place-based alliance and gain access to multi-disciplinary services from across the entire service system
- Intentional care coordination processes with a dedicated Care Coordination Facilitator
- Coordinated responses for individuals and families requiring a range of supports
- State-wide network ensures support for individuals & families if they move region
- Framework designed to support sustainable outcomes

KEY BENEFITS FOR HOUSEHOLDS

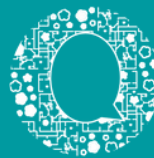
- Support to access, engage & navigate the service system
- Tailored, coordinated support informed by individuals & families
- Commitment to sustainable outcomes
- Respectful and professional engagement
- Safeguards that protect personal information

KEY STRUCTURAL BENEFITS

- Enhanced place-based collaboration across government & non-government services
- Strengthened regional systems & processes
- Purposeful data to inform future place-based approaches
- State-wide service delivery framework
- Strong links with Department of Communities, Housing, and Digital Economy and Place-based Response Teams
- Continual testing of effectiveness, outcomes, and impacts
- Funded in the Housing Action Plan 2021-25



**Queensland
Government**



SHELTER
because housing matters

Q Shelter acknowledges the Traditional Owners of the lands from across Queensland. We pay our respects to Elders past, present and emerging, for they hold the memories, the traditions, the culture and hopes of Aboriginal and Torres Strait Islander peoples across the state.