

[View this email in your browser](#)



## November Home Matters

### From our Leadership Team

Dear Colleagues,

As you are undoubtedly aware, numerous members of the Q Shelter team have been extensively engaged with various stakeholders across the state. I shall refrain from delving into this matter in great detail, as you may have encountered numerous related [posts on LinkedIn](#). For those who may not have kept up with our recent endeavours, I strongly encourage you to acquaint yourselves with the information available [through these posts, and follow us on LinkedIn for future updates](#).

The extent of engagement and the wealth of information gleaned from all participants have proven to be of immense value to us, and for this, we extend our heartfelt gratitude.

Subsequent to my last communication, I had the privilege of embarking on several visits throughout Queensland. Among these, I wish to underscore three particular locations: **Mt Isa, Innisfail, and Mareeba**. These areas, like services throughout the state, are grappling with common challenges, in addition to unique obstacles within their respective contexts. As with all our counterparts within the sector, each service we encountered exhibited remarkable dedication to supporting their communities.

Our participation in the Housing conference afforded us the opportunity to engage with numerous individuals and engage in enlightening discussions with colleagues from across the nation.

Of personal significance were the presentations delivered by The Shelter Collective from Rockhampton and Gladstone, the System Design session on day three, and the Final Plenary. Should you have access to recordings of these sessions, I wholeheartedly

recommend viewing them.

Looking ahead, we have several events scheduled for the upcoming week, including:

- A showcase of [Innovative Projects and Programs for Housing Older Women](#).
- A [networking event on Wednesday evening](#).
- [Regional Representatives forum](#), where representatives from across Queensland convene to deliberate on place-based challenges and opportunities specific to their respective regions. Collectively, we present these findings to the government.
- [Strengthening Tenant Participation](#) presentation and co-design workshop.
- [Peaks Partnership CEO and Leaders Forum](#) – there is still an opportunity to secure tickets for these events.
- Q Shelter's [Annual General Meeting and End-of-Year celebration](#).

## What does it mean to work in the housing and homelessness sector?

Before I sign off, I would like to [point you to a draft that Liz Kemp and I have worked on](#). We were thinking about what we would say to encourage people to work in the housing and homelessness sector, drawing inspiration from connecting with so many of you over the last few months.

I would [value your feedback](#) on this draft as we shape how we can promote working in our sector in the future.

Warm regards,



**Floyd Stephens**  
Manager Capacity and Integration

---

## Important November Events

1. **Regional Representatives Forum:** This November's Regional Forum will have truncated format due to the sheer volume of activity across the sector at the moment. We are communicating directly with regional representatives on their

travel needs and requirements. We invite you to register for these additional events in November.

2. [\*\*Sector Networking reception – from 5.00pm on 8 November 2023:\*\*](#) An opportunity to welcome Regional Representatives and others ahead of the CEO and Leaders' Lunch on Thursday 9 November.
3. [\*\*Strengthening Tenant Participation - 9:30am - 12:00pm 9 November:\*\*](#) This session is for tenants who are interested in developing input to Q Shelter's annual policy submission 'Better Together'. We will explore models of tenant participation and how these models are underpinned by policy settings and capacity-building activities that Q Shelter can consider for 2024.
4. [\*\*Queensland Housing and Homelessness Peaks' Partnership CEO and Leaders' Lunch – from 1.00pm on 9 November 2023:\*\*](#) A keynote address combined with work to refine key areas of policy and investment as part of peak organisations' annual policy statements and other work to support the sector. Various tables will be themed for key issues and population groups for after-lunch policy development. This event is a collaboration involving Homelessness Queensland, Queensland Youth Housing Coalition, Aboriginal and Torres Strait Islander Housing Queensland, CHIA Qld, CSIA and Q Shelter.
5. [\*\*Q Shelter AGM and End of Year Celebration – Free event for members and stakeholders – From 4.00pm on 9 November 2023:\*\*](#) Join us as we showcase our year in review, report to members and stakeholders and announce the Deirdre Coghlan Bursary and the inaugural Kent Maddock Award for Place-based partnerships.

All these events will be held at the Hotel Grand Chancellor in Spring Hill, Brisbane, with the exception of the Strengthening Tenant Participation forum, which will be hosted at the Q Shelter Office in Spring Hill.



## Q Shelter's submission to the Housing Availability and Affordability Bill

Q Shelter have this week [\*\*submitted a response to the Queensland Government's Housing Availability and Affordability \(Planning and Other Legislation Amendment\) Bill 2023.\*\*](#)

Q Shelter supports the intent of the amendments to improve efficiency in the planning system to help deliver more affordable homes, quicker.

Our submission reinforces the commentary and recommendations we have made in other recent [\*\*submissions, such as to the draft Shaping SEQ 2023 Update,\*\*](#) and details the position we hold based on our discussion with members and stakeholders on two of the key interventions proposed by the bill.

1. The State playing an active role in facilitating the development of affordable housing, including by acquiring land or creating easements to facilitate new dwelling construction.

2. A streamlined approach to assessment of development applications relating to affordable housing and infill development.

You can [read the submission in full on our website](#).

## Responses to the National Housing and Homelessness Plan Issues Paper

Q Shelter notes that many peak and industry bodies across the sector and in related areas have also made important submissions to the Federal Government's National Housing and Homelessness Plan (NHP) Issues Paper. This includes some of our member organisations and those in the Peaks Partnership.

We encourage our members to read [submissions from organisations such as Homelessness Australia](#).

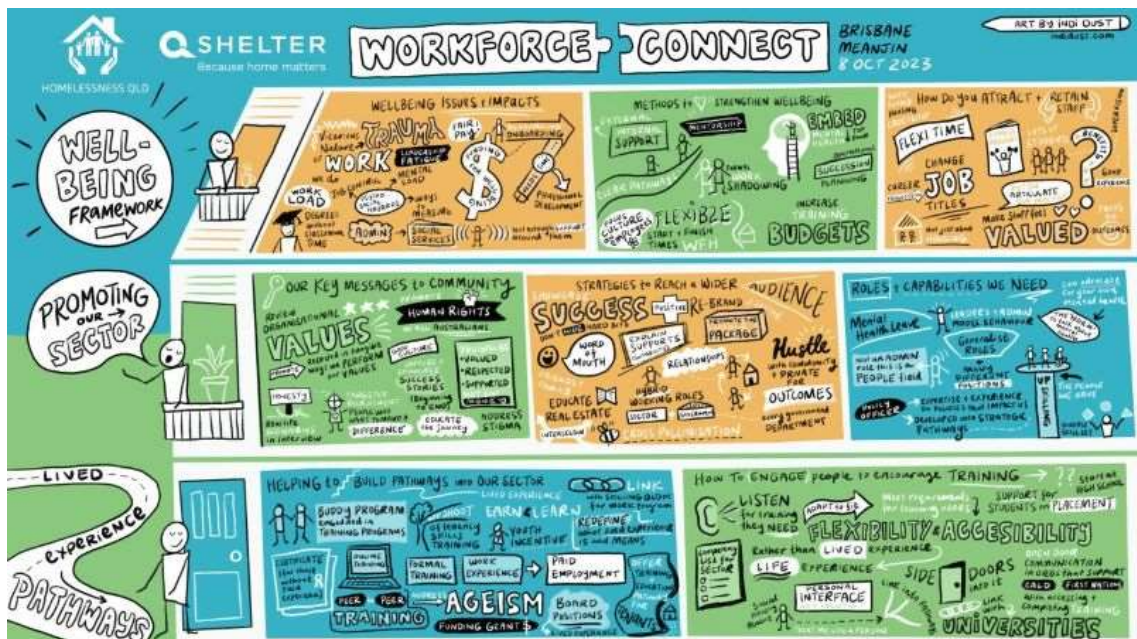


# Workforce Connect

## Wellbeing, Attraction and Retention Workshops

The Workforce Connect Project Team have now completed 14 Wellbeing, Attraction and Retention workshops throughout key urban and regional areas across Queensland. It has been invaluable to hear direct from staff in the housing and homelessness sector about the challenges faced, and to workshop resources and solutions to challenges.

The graphic below is from our Brisbane workshop, where visual storyteller, Indi Tansey, captured the emerging themes and discussion points. We plan to use this graphic, as well as other information and resources from other workshops, to help share and articulate the framework we are building.



## Sector Survey

Our [state-wide Sector Survey](#) is the next phase of our information gathering and we've had a promising response so far. Our goal is at least 500 responses to the survey to give us a solid foundation for a wellbeing framework that supports the attraction and retention of our sector workforce in Queensland.

We're excited to present the interim results of the survey at this month's CEO and Senior Leaders' Forum on 9 November, and we'll then continue to share the emerging results. The information gathered from both the survey and the workshops have been encouraging, with some clear consensus emerging across the state, as well as highlighting regional themes.



**Make a difference to our sector's workforce wellbeing, attraction and retention!**

The inaugural, anonymous survey of the Queensland housing and homelessness sector is now open.

HOMELESSNESS QLD QSHELTER

Workforce Connect

**START NOW**



## Calculating the value of social and affordable housing

The compelling value of social and affordable housing can now be quantified, thanks to an Australian first calculator that estimates its wider social, economic and environmental benefit.

According to the SIGMAH calculator (Social Infrastructure and Green Measures for Affordable Housing) the 40,000 social and affordable homes to be supported under the Commonwealth's National Housing Accord and Housing Australia Future Fund over the next five years will create an additional \$4.4 billion worth of wider benefit over the next four decades.

[Community Housing Industry Association](#), along with other partners including Shelter NSW, worked with Associate Professor Christian Nygaard and Dr Trevor Kollmann from Swinburne University of Technology to develop the SIGMAH resource, which is underpinned by [extensive peer reviewed research](#).

Both not-for-profit and for-profit organisations can [register to access the calculator via the CHIA website](#).



## Research-based information on substance

# abuse and homelessness

“People who are dually diagnosed with severe mental illness and substance use disorders constitute 10%-20% of homeless persons. They are a heterogeneous and extremely vulnerable subgroup with complex, poorly understood needs.”

- Homelessness and dual diagnosis

The Addiction Group, an organisation dedicated to providing comprehensive, research-based information on substance abuse, has recently published [an in-depth article exploring the connection between Homelessness and Addiction](#).

The article is one of many on their website designed to offer:

- **an in-depth exploration of the issue.** The article comprehensively explains the intricate connection between homelessness and addiction.
- **evidence-based information.** The content is backed by credible sources and offers insights into the primary causes of homelessness, including the inability to secure employment, drug and alcohol dependence, and mental illnesses.

The article addresses various facets of the issue, from the definition of homelessness to the relationship between mental health, addiction, and homelessness.

## [The Connection Between Homelessness and Addiction](#)



## Latest AHURI Research: Poverty and Australian housing

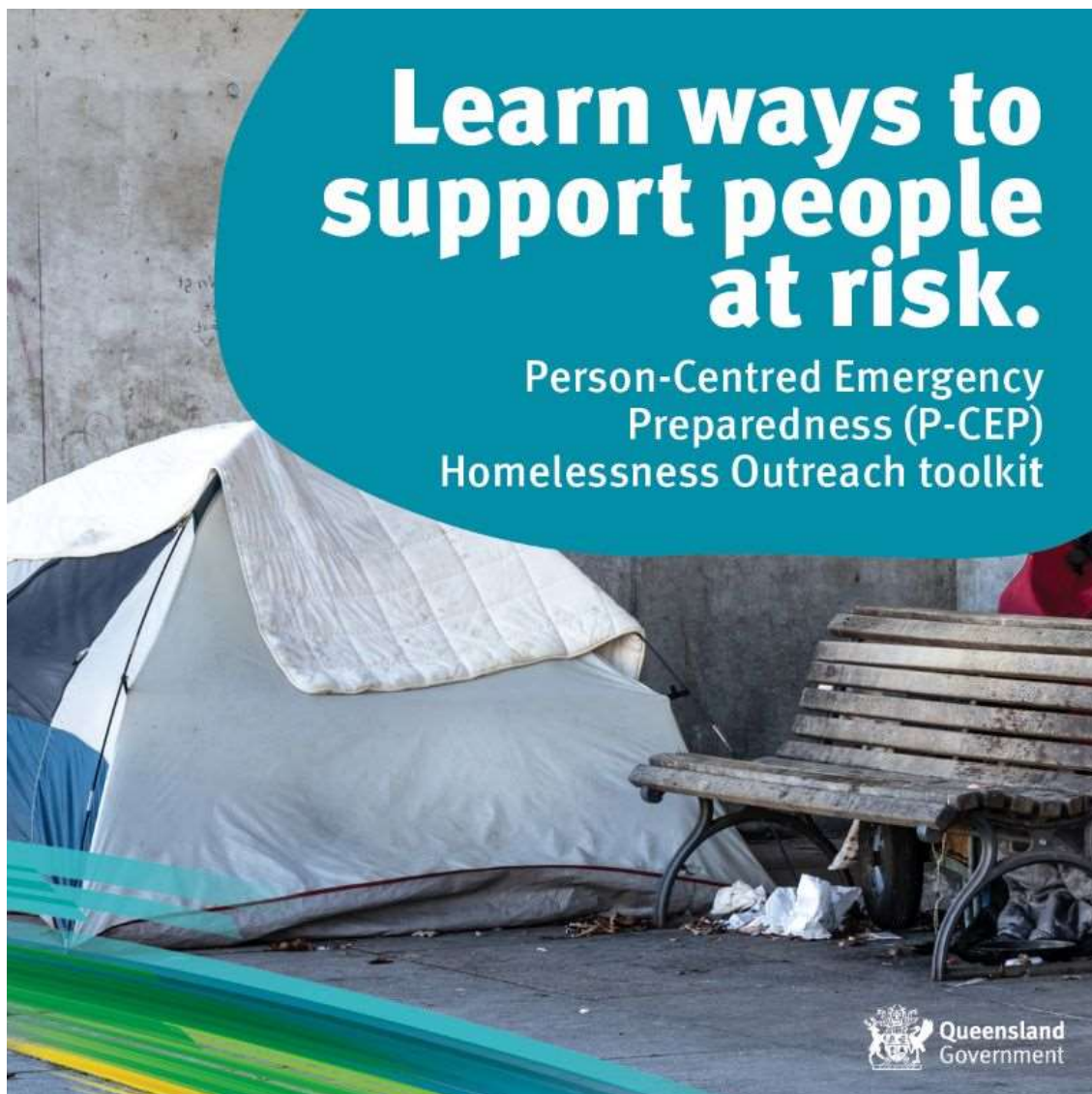
People experiencing poverty face increased risks to their health and wellbeing when they cannot access affordable housing. High housing costs may further entrench some groups of people in poverty, while poor quality housing can make poverty outcomes worse.

These findings are from AHURI's latest research report: [Poverty and Australian housing: findings from an Investigative Panel](#), undertaken for AHURI by researchers from UNSW and Swinburne University of Technology.

It examines the relationships between housing costs and poverty, and identifies policy changes that could alleviate the social costs of poverty. Among other findings, the report refers to extending eligibility for some specialist homelessness programs as well as for Commonwealth Rent Assistance, and reforming residential tenancy laws as some of the effective responses that could be implemented quickly.



## Disaster preparedness resources for people experiencing homelessness



The Queensland Government has partnered with The University of Sydney, Queenslanders with Disability Network and the Community Services Industry Alliance to develop a Person-Centred Emergency Preparedness (P-CEP) Homelessness Outreach toolkit including an outreach guide, videos, and learning modules.

Community services sector, local government and emergency services, play a significant role in helping people in disaster-affected communities.

These resources will provide the sector with practical tools to:

- learn ways to support people at risk or experiencing homelessness to prepare for and recover from disaster.
- develop emergency plans that are inclusive of the needs of people experiencing homelessness, so they are supported before, during and after disaster.

Development of the resources follows extensive consultation with people who have experienced or are experiencing homelessness and draws on the expertise of people across emergency services, community service organisations, and local government.

You can read more about how you can help people experiencing homelessness prepare for disaster and [download the toolkit, on the Disaster Risk Reduction website](#).



## Government announces housing plan for Redlands

The Queensland Government has unveiled its [draft Redlands Housing Strategy](#), aiming to meet the needs of current and future Redlands residents to 2046.

The community are being asked to provide feedback to the draft strategy by **Sunday 12 November**. You can provide feedback by [completing a survey](#) online, by visiting an in-person [information session](#) (the final session is on 2 November), or you can book to [talk to a planner](#) online.

You can read the full draft on the [Draft Redland Housing Strategy 2023-2046 on the dedicated website](#), and the [Queensland Government's media statement is also available on their website](#).



## Training & Events

### Innovative housing programs and projects for older women





**Tuesday 7 Nov 2023, 10:00am - 11:00am. Free and online.**

An estimated 100,000 older women are at risk of homelessness in Queensland. This forum will present the latest projects and programs that address this crisis. You'll hear from a number of innovative programs during this free session.

The [Sharing with Friends](#) president, Anne Landsberg, will talk about this innovative co-housing solution for older women.

[Win Housing Projects](#) Director, and Housing Older Women Movement and Q Shelter Member, Dianne Estreich.

[Project 55](#), an initiative by Elevate Residential sponsoring older women in dire housing need for safe and secure, affordable housing, through their charitable partner BHC. Project 55's target is to attract 55 new property managements to the campaign, with all profits from management fees directly sponsoring safe and secure accommodation for women aged 55+ who are at risk of homelessness.

[REGISTER NOW](#)

---

## Sector Networking Event

**Wednesday 8 November 2023, 5:00pm - 6:30pm. Hotel Grand Chancellor, Spring Hill.**

Members: \$30, Non-members: \$40, People with lived-experience: \$10 (all prices ex GST)

Join your colleagues who are working hard to achieve a healthy housing system and an end to homelessness for informal refreshments and networking. This is a great opportunity for those travelling to Brisbane ahead of the CEO and Senior Leaders' Forum, or the Regional Representatives Forum on Thursday to meet up.

We look forward to seeing you there!

[REGISTER NOW](#)

---

## Strengthening tenant participation in Queensland

**Thursday 9 November 2023, 9:30am - 12:00pm. Free, Q Shelter office, Spring Hill.**

Explore models of tenant participation and how these models are underpinned by policy settings and capacity-building activities. Our discussion will then focus on designing an approach to policy and investment in Queensland as a basis for dialogue with the government and the housing industry.

This session is for tenants who are interested in developing input to Q Shelter's annual policy submission 'Better Together'. It will also focus on developing ideas for building sector capacity for tenant participation that Q Shelter can consider for 2024.

REGISTER NOW

## Peaks Partnership: CEO & Senior Leaders' Forum and Lunch

Thursday 9 November 2023, 1:00pm - 4:00pm. Hotel Grand Chancellor, Spring Hill.  
Members: \$80, Non-members: \$100, People with lived-experience: \$10 (all prices ex GST)

Fellow leaders from Queensland's housing and homelessness sector are invited for a plated lunch, networking, [AGM and End-of-Year Celebration](#).

Our keynote speaker is the Hon. Meaghan Scanlon MP, Minister for Housing. We will also hear presentations on *Housing supply strategies in Queensland* from **Sarah Amos, Deputy Director General, Department of Housing**, and the *Housing Availability and Affordability (Planning and Other Legislation Amendment) Bill 2023* from **Christopher Aston, Executive Director, Policy and Statutory Planning**.

Following the presentations we will draw attendees together to workshop eleven key topics, which the Peaks Partnership will draw on in their policy submissions to government.



REGISTER NOW

## Q Shelter AGM and end-of-year celebration

Join the Q Shelter staff team, management committee and members in a celebration of our work over 2022-2023. Refreshments will be served ahead of the Annual General Meeting and will be followed by our End of Year Celebration.

The AGM includes voting for the next Management Committee as well as the presentation of the Deirdre Coghlan Bursary and Kent Maddock Memorial Award.

[REGISTER NOW](#)

---

## Feeling The Pulse – Community Housing Futures

**Wednesday 15 November 2023, 2:00pm - 2:45pm. Free and online.**

On November 15, the Community Housing Futures team will be hosting the last **Feeling The Pulse** session for 2023. Community housing providers have always played a vital role in delivering substantial social value to our communities. However, the challenge lies in quantifying, interpreting and effectively demonstrating this impact to secure future funding and investments.

At this session we welcome our [guest presenter ARUP](#) – a global collective of designers, engineers and sustainability consultants dedicated to sustainable development – to talk about environment, sustainability and governance (ESG), and how it applies to the social and affordable housing sector. We invite all to [register for this free event](#), and complete a [quick pre-event survey relating to this session](#) with us and Arup.

[REGISTER NOW](#)

---

## Asset Managers' Network Meeting

**Thursday 23 November 2023, 10:30am - 12:00pm. Free and online.**

The Asset Managers Network provides a forum for Community Housing Providers to share issues and best practice, and to hear from experts in the field.

Asset managers play a vital role in the sustainability of social housing and in the quality of housing assistance experienced by tenants. Their role is challenging and essential to the success and viability of housing provision. This meeting includes discussion, speakers, and an exchange of ideas and resources among asset managers to ensure they have access to collegial support, training, information, and tools to help their work.

[REGISTER NOW](#)

---

# Adaptable Housing for Australian Households

Researchers from The University of Queensland's School of Architecture are conducting research to know more about the housing needs of different types of households in Australia today, and how flexible and adaptable current dwellings are to accommodate changing household needs.

They are asking for volunteers to [take part in a short, anonymous online survey](#) to contribute to the project: *Offsite manufacture reimagined for high-performance adaptable housing*.

---

## Other Sector Events

### RTA Webinar: Tenancy Databases

Thursday 23 November 2023, 11:00am - 11:15am. Free and online.

This webinar will explain how property owners/managers can use tenancy databases, and what tenants can do if they believe they are unfairly listed.

[MORE INFORMATION](#)

---

### AHURI Webinar: Supporting first home buyers

15 November 2023, 10:00am - 11:30am (Qld Time)

#### ***The good, the bad and the unintended consequences.***

While high house prices are often cited as the biggest challenge faced by first homebuyers, recent AHURI research highlights that the problem is significantly more complex. Critically, existing policy settings are likely to have exacerbated rather than alleviated the challenge faced by first homebuyers to finance home ownership.

This 90 minute panel discussion will explore the findings from the AHURI Inquiry: [Financing home ownership: opportunities and challenges](#), including a discussion of what actions first home buyers are taking to achieve home ownership, and what policy interventions do and don't work to support first home buyers in the Australian market.

[MORE INFORMATION](#)

**Job Opportunities**

**WE ARE  
HIRING!  
JOIN OUR TEAM**



**Service  
Integration**

**REGIONAL CARE  
COORDINATOR  
IPSWICH**

Full-time

- ✓ Provide local assistance to strengthen existing and emerging Care Coordination Groups to provide person-centred and place-based care planning for people with complex needs
- ✓ Support sector partners to facilitate care plans and improved service system responses
- ✓ A senior officer with a proven track record in engagement and community development

**APPLY NOW**

Full details on our site



COMMUNITY HOUSING LTD  
GROUP OF COMPANIES

## Asset and Facility Manager

Support and manage staff and contractors across Queensland, coordinating and overseeing activities to ensure smooth operations and delivery of services. Assist in the strategic review of the growing portfolio of over 1,200 properties. **Applications close 14 November.**

---

[Regional Care Coordinator, Ipswich - Q Shelter](#)

[Mental Health Support and Advocacy Worker, Slacks Creek - YFS](#)

[Integrated Housing Specialist, Young Parents, Slacks Creek - YFS](#)

[Coordinator, Remote and Indigenous Services, Brisbane - Orange Sky Australia](#)

[QSTARS Tenancy Advice Worker, Spring Hill – Tenants Queensland](#)

[Vendor Sales and Support Coordinator, Brisbane - The Big Issue](#)

## Service Integration

### Brisbane

Both Brisbane regions have been involved in a number of events recently, including a joint presentation at the **Southern Women's Mental Health Network**.

Last Friday, Regional Care Coordinator Daniel Taber-Kennedy attended the **Support Groups QLD** 40th Anniversary. Support Groups QLD, make a positive impact in the community by supporting people to establish, find or sustain supports groups to improve their health.



Danny was also privileged to attend the Annual General Meeting for **Gateway Housing**, where Executive Officer, Klaus Fellenberg, celebrated his first AGM with the organisation. He also participated in **The Salvation Army's** Story Summit. This is a participatory workshop where the sector can hear the stories of people with 'lived experience', hear about significant changes in their lives, and workshop positive methodologies.

### **Brisbane North**

Under 1 Roof meets fortnightly on Tuesdays, and BNCC meets fortnightly Thursdays. On **16 November** we will meet face-to-face at Zillmere Community Centre for a light lunch ahead of our care coordination meeting at 1.30pm.

For more information please [contact Philip Smith](#).

### **Brisbane South**

The South West Care Coordination Group (SWCCG) meets every second Wednesday via Microsoft Teams with the next meeting scheduled for **Wednesday 15 November**. It continues to see positive housing and support outcomes for some of the most vulnerable people in the community. If you are working with an individual or household who is homeless or at risk of being homeless with complex needs, please consider a referral into the SWCCG.

For more information please [contact Daniel Taber-Kennedy](#).

---

## **Cairns**

Some of the Q Shelter team recently visited Cairns, Innisfail and Mareeba to host the Workforce Connect workshops, and to meet with local members, stakeholders and service providers.



---

## Gold Coast

The Gold Coast Housing Network (GCHN) Care Coordination Group meets on the second and fourth Thursday of each month from 10:00am-11:00am on Teams (next meeting **9 November**). New members are always welcome. Contact Ryan O'Leary at [admin@gchomelessnessnetwork.org.au](mailto:admin@gchomelessnessnetwork.org.au) or 0422 846 067 to discuss.

The GCHN Network held their AGM on 1 November, and the next meeting is scheduled for **Wednesday 6 December** from 10:00am-11:30am at the Southport Community Centre.

---

## Logan

Logan held the second **'Tenancy Sustainment for Real Estate Professionals'** event on Friday 27 October. This event included guest speakers from Q Shelter, SSI, YFS, Kingston East Neighbourhood Group, Home In Place, Department of Housing, and Wesley Mission STARH program. We also had a guest speaker from a real estate provider, who spoke about their experience in engaging with community organisations.

The purpose of the event was to educate real estates on services that their tenants can access in order to gain support with sustaining their tenancies. The event was well attended by a variety of real estates within the Logan Region. We plan to host more events like this in 2024.

Logan's face-to-face meetings continue to flourish with the addition of new organisations into Logan Care Coordination as areas of need are identified. This has resulted in effective outcomes for clients referred to Care Coordination and outstanding service collaboration.

Current service participation includes representatives from both government and non-government housing and homelessness services, as well as mental health, health, youth, CALD, aged care, family, domestic violence and employment services.

Meetings are held fortnightly on a Tuesday, in person at **SSI Logan**. The next meetings will be on **Tuesday 14 and 28 November, 10.00am to 12.00pm**.

For more information about Logan region activities, please contact Regional Care Coordinator [Rebecca Hinton](mailto:Rebecca.Hinton@gshelter.asn.au). Referrals can be sent to [logancc@gshelter.asn.au](mailto:logancc@gshelter.asn.au).

---

## Mackay



**Mackay Care Coordination Group** continues to meet every second Wednesday at Mackay Housing Service Centre, with an online Teams option. The next meetings will be **15 and 29 November 1:30pm to 3:00pm**. Please contact [Yvonne Harris](#) with any questions or for more information.

---

## Moreton Bay

The **Moreton Bay Housing & Homelessness Network** meeting was held on 17 October. The Network meets on the **third Tuesday of every month, and the next meeting will be Tuesday 21 November**. Tenants Queensland provided an information session to the Network members on what services they offer, including Q Stars programs in our region.

Future meetings will continue to hold service information sessions to build sector capacity within the Moreton Bay region. For information on the Moreton Bay Housing & Homelessness Network please contact the Moreton Bay Regional Care Coordinator, [Shane Frost at mbcarecoordination@encircle.org.au](mailto:Shane.Frost@mbcarecoordination@encircle.org.au).



**MORETON BAY  
REGIONAL  
HOMELESSNESS  
FORUM**

**Friday 3 November | 1pm - 4pm**  
**Pendicup Hall 365 Samsonvale Rd, Warner**

### Moreton Bay Regional Homelessness Forum

Join Q Shelter and Encircle Community Services for an action orientated forum aimed at developing an action plan to address local housing and homelessness issues. The forum is not just for housing and homelessness services but is open to all organisations across the service system who are supporting individuals and families with cost of living and housing

pressures.

**Moreton Bay Regional Homelessness Forum Friday 3 November, 1pm – 4pm at Penticup Hall, 365 Samsonvale Rd, Warner.** Free to register and free catering. For more information, please contact [Shane Frost](#).

## Care Coordination Groups

In Moreton Bay, the two Care Coordination Groups are continuing to operate fortnightly as normal.

- The **Moreton Bay North Care Coordination Group** meetings are hosted fortnightly in person at the Moreton Bay Housing Service Centre and online via Teams.
- The **Moreton Bay South Care Coordination Group** meetings are hosted fortnightly in person at the Encircle Kallangur Neighbourhood Centre and online via Teams.

For more information regarding the Moreton Bay Care Coordination Groups and possible referrals, please contact the [Moreton Bay Regional Care Coordinator, Shane Frost](#).

---

## Redlands, Bayside & Southern Moreton Bay Islands

Redlands has some exciting news we want to share and encourage people to apply for. Regional Care Coordinator, Bree Tukavkin, recently attended a "thank you" breakfast from Redland City Council for the Civic Support Fund, which they now have in action.

### About the Civic Support Fund

Redland City Council established the Civic Support Fund to provide cost-of-living relief to vulnerable residents on Redlands Coast through grants to community organisations that provide human and social support to residents who:

- have been financially or materially impacted by the cost of living; and
- are vulnerable or have increased risk factors due to cost-of-living pressures. E.g.
  - Child safety
  - People experiencing or at risk of Domestic and Family Violence
  - People experiencing or at risk of homelessness and housing stress
  - Mental health
  - Frail, ageing and disability.

Eligible not-for-profit community organisations can apply for funding across three categories of Quick Response, Minor Grants and Major Grants. For more information go to [Civic Support Fund | Redland City Council](#) website.

### Redlands Community Hubs

We are excited to announce our Community Services sector has come together to give you one spot where each month you can discuss housing concerns, finances, support with mental health, alcohol and other drugs, health, personal or family concerns.

We will have morning tea, emergency relief food and clothes, and much more. [Check our flyers below for all the dates, times and venue](#). We look forward to seeing you at the **Capalaba Library, Noelene Street Capalaba, 9am to 1pm on Tuesday 28 November**.

## SMBI Community Hub Events

[Click the flyer below for up-coming dates.](#)

We will have a huge variety of services attending these hubs and hope it's a one-stop-shop to assist you with different aspects of your life.



**Redlands Community Hubs**

**DATES THESE EVENTS WILL BE ON**

- TUESDAY 16TH MAY
- TUESDAY 27TH JULY
- TUESDAY 22ND AUGUST
- TUESDAY 19TH SEPTEMBER
- TUESDAY 17TH OCTOBER
- TUESDAY 28TH NOVEMBER
- TUESDAY 12TH DECEMBER

**9 am to 1pm**

**Capalaba Place  
Capalaba Library**

**14 Nooleen Street, Capalaba**

**SERVICES YOU CAN CHAT TO**

- Housing and Rent Connect
- Youth
- Families
- NDIS
- AoD
- Health
- Mental Health
- Women and Men

**FOR FURTHER INFORMATION CONTACT**

BREE TUKAVKIN  
BREE.TUKAVKIN@QSHELTER.ASN.AU  
0411738159

Logos: Dependable, Redland City Council, QSHN, NDIS, Maybank Association Inc., Redland City Council, Maple Plan, MICHAN PROJECTS, Silky Oaks, Government, APPLIED ABILITIES, Footprints Community, QSHELTER, Wesley Mission, NIGHT NINJAS, PRINTED BY KIM RICHARDS MP OFFICE



**2023 SMBI Community Hubs**

**MACLEAY ISLAND**

- WEDNESDAY 22ND FEBRUARY
- WEDNESDAY 5TH APRIL
- WEDNESDAY 14TH JUNE
- 9AM TO 1PM

**MACLEAY ISLAND COMMUNITY CENTRE HALL**

**RUSSELL ISLAND**

- WEDNESDAY 8TH MARCH
- WEDNESDAY 3RD MAY
- WEDNESDAY 28TH JUNE
- 9AM TO 1PM

**RUSSELL ISLAND RECREATIONAL HALL**

**PLEASE COME AND JOIN US FOR THE SMBI COMMUNITY HUB EVENTS**

**WE WILL HAVE SERVICES AND SUPPORTS FROM THE FOLLOWING SECTORS**

- HOUSING
- YOUTH
- CHILDREN
- FAMILIES
- MENTAL HEALTH
- AGED CARE
- NDIS

**FOR FURTHER INFORMATION CONTACT**

BREE TUKAVKIN  
BREE.TUKAVKIN@QSHELTER.ASN.AU  
0411738159

HILTON TRAVIS  
PRESIDENT@SMBILISTENERS.ORG.AU  
04442255

**MORE INFORMATION ABOUT THESE HUBS CAN BE FOUND**

<https://smbi.org.au/community-hubs>

Logos: Maple Plan, Dependable, BlueCare, MICHAN PROJECTS, APPLIED ABILITIES, Footprints Community, QSHELTER, Redland City Council, SMBI LISTENERS INC.

The **Redlands Care Coordination** meetings run every second **Tuesday 10am to 12pm**, and the next meeting is **7 November 2023**. Meetings are held at the Bayside Housing Centre, Shop 3/8-12 Dollery Road, Capalaba.

**Bayside Housing & Homelessness Network** meets on the first **Thursday** of each month. Join us for our next meetings on **2 November** and **7 December** from **10am to 12pm** at **Bayside Housing Centre**, Shop 3/8-12 Dollery Road, Capalaba.

Please contact Bree Tukavkin on 0411 738 159 or [Bree.tukavkin@qshelter.asn.au](mailto:Bree.tukavkin@qshelter.asn.au) for more detail.

Please use these links if you need to access the [Care Coordination Consent Form](#) or the [Care Coordination Group Referral Form](#).

---

## Sunshine Coast

**Sunshine Coast Care Coordination Group** meets on the first Tuesday of every month (next meeting **7 November**) 11am-1pm via TEAMS. New members are always welcome. Contact Tracey McNee [tmcnee@ifys.com.au](mailto:tmcnee@ifys.com.au) or 0417 566 075 to discuss.

The next **Sunshine Coast Housing and Homelessness Network (SCHHN)** is scheduled for **Wednesday 29 November**, which will be our last meeting of the year.

---

## Townsville

Care Coordination Groups continue to operate to ensure that participants are getting the best support while seeking sustainable housing outcomes. Please contact [Kym.Musumeci@qshelter.asn.au](mailto:Kym.Musumeci@qshelter.asn.au) for more details.

---

## Wide Bay

Care Coordination is now active in the Wide Bay region, with Carole Medcalf now in the role. Carole has been busy establishing productive partnerships across the sector in the Wide Bay region. This has included connection at all government levels and building a collective of multi-disciplinary services.

Carole joins a broader group of state-wide, Place-Based Care Coordinator facilitators. Carole is employed by IFYS and has the backbone support of Q Shelter. Carole is excited about providing a coordinated response for individuals and families that are requiring a range of supports in order to assist in their journey of secure housing.

If you are interest in learning more about Wide Bay Care Coordination Group, [contact Carole on cmedcalf@ifys.com.au](mailto:Carole.on.cmedcalf@ifys.com.au) or 0473 472 357.

---

## Sector News & Articles

Did you know you can catch up on [Research relevant to the housing and homelessness sector](#), as well as [news articles, features and stories](#) on The Deck?

Get the latest sector news and research



### Research

Our top five open access, peer reviewed research papers and journal articles on subjects relevant to the housing and homelessness sector.



### News

A curated feed of news articles, opinion pieces and commentary on the topics that impact people and organisations working in our sector.



[Kids escaping family violence can be vulnerable to intimate partner abuse - The Conversation](#)

[Brisbane City Council calls for more powers to ensure affordable homes stay affordable - ABC News](#)

[City of Moreton Bay takes bold step to address homelessness - Echo News](#)

[Housing crisis: Mirvac bets \\$1 billion on demountable homes - Sydney Morning Herald](#)

[NATSIHA calls for urgent action to address housing needs and First Nations empowerment - Media Release](#)

[A shortfall in housing in South East Queensland good news: RPM SEQ Market Update - Urban](#)



## Quotes

“People just call me ... the girl in the van, or that homeless girl from West End with dirt on her face. None of those things say anything about who I really am or what I want to be.”

[Trent Dalton](#), *Lola in the mirror*



***Q Shelter acknowledges Australia's Aboriginal and Torres Strait Islander peoples as the traditional owners and custodians of the lands where we live, learn and work. We pay our respects to their Elders, both past and present.***

---

Want to change how you receive these emails?  
You can update your preferences or unsubscribe from this list.